



Job title:

Welder Fabricator

Responsible to:

Head of Construction



cardifftheatricalservices.co.uk

Cardiff Theatrical Services is a world-class scenery manufacturer delivering sets and scenery to many of the world's leading performing arts companies of theatre, opera and ballet such as The Royal Opera, National Theatre, Opera North, Sonia Friedman Productions, English National Opera, Glyndebourne, Cameron Mackintosh, Atlanta Ballet, Almeida Theatre, Chicago Lyric Opera, *Mamma Mia! – The Party* and Welsh National Opera.

Based in Cardiff and a wholly-owned subsidiary of world-renowned Welsh National Opera, CTS has played a leading role in the development of the Welsh capital as one of the UK's fastest growing creative and artistic hubs outside London. Cardiff boasts vibrant, thriving and diverse arts, design, cultural and media communities and world-class venues and creatives.



General Description

Cardiff Theatrical Services (CTS) is a wholly owned subsidiary of Welsh National Opera. The construction department is made up of the Carpentry department, Welding and Fabrication department and the Drawing Office.

Department CTS

Salary £23,646.48 - £26,364

Permanent

Deadline for Applications

Monday 19 December 2022

Interview date

week commencing 9 January 2023

Main purpose of job

To fabricate and assemble scenery to meet the standards required by the company and the client, working predominately from construction drawings and occasionally by verbal instruction; to follow projects from the workshops through to installation on stage or at other venues.

Scope

Welder Fabricators report directly to the Head of Construction for all personnel matters and liaise with the Construction and Project Management teams on a day-to-day basis. They will work as part of a team that includes CTS's Scenic Art Department to produce first class scenery as contracted to CTS by various clients both in the UK and abroad.



Key responsibilities

Technical skills

- ✎ To understand and work from construction drawings.
- ✎ Be able to work predominantly with steel (expected at Grade 3), and occasionally with Aluminum or other materials using welding, bending, cutting, and shaping techniques (expected at Grades 2 & 1)
- ✎ Machine materials as necessary using a variety of tools and equipment, fabricating frames, platforms and structures.
- ✎ Carry out set refurbishment as required
- ✎ Assemble structures in the workshops, fit-up area or on site.
- ✎ Produce work to a high standard and ensure elements are finished to agreed specifications.
- ✎ Attach all necessary fittings as per specifications with particular attention to the safety of the end user.

General maintenance

- ✎ Cleaning of tools and equipment to keep in good working order
- ✎ Report any faults to Deputy Head of Construction to facilitate repair
- ✎ Keep personal and communal work areas clean and tidy
- ✎ Book out all materials used and ensure minimum waste

Communication skills

- ✎ Liaising with CTS staff to ensure the smooth and efficient running of project.
- ✎ Identify and discuss any opportunities to improve productivity and service.
- ✎ Observe stock levels regarding your own job and report any shortfalls.

Organisation skills

- ✎ Forward planning of your own work to ensure that you meet your deadlines.
- ✎ Forward planning of space requirements to ensure minimum disruption to general flow of work.

Personal Responsibilities

- ✎ To undertake projects alone and unsupervised when requested.
- ✎ To supervise casual and contracted labour as necessary.
- ✎ Develop positive relationships with colleagues, managers, and team members.
- ✎ Encourage self-development and self-motivation.
- ✎ Promote good working practices and procedures.
- ✎ To drive company vehicles and hired vehicles when required.
- ✎ To attend installations on site as required.
- ✎ To support the management in the smooth running of projects.
- ✎ The health and safety of all team members.

General

- 7 To behave in accordance with our values.
- 7 To maintain confidentiality and observe data protection and associated guidelines where appropriate.
- 7 To ensure compliance with our policies and procedures at all times.
- 7 To undertake any training appropriate to the post.
- 7 The role will be based at the CTS site in Cardiff but will involve travel to locations within the UK and abroad.

The duties in this job description are not exhaustive and may be altered at any time to reflect the changing needs of the organisation.



Company Values

Inclusive We have a workplace culture where all people are respected and valued

Collaborative We work as a team to achieve common goals

Dynamic We challenge ourselves creatively and encourage new ideas

Generous Our people use their talent, knowledge, and skills with a generosity of spirit

Responsible We act with integrity and accountability



Person specification

Essential Skills & experience

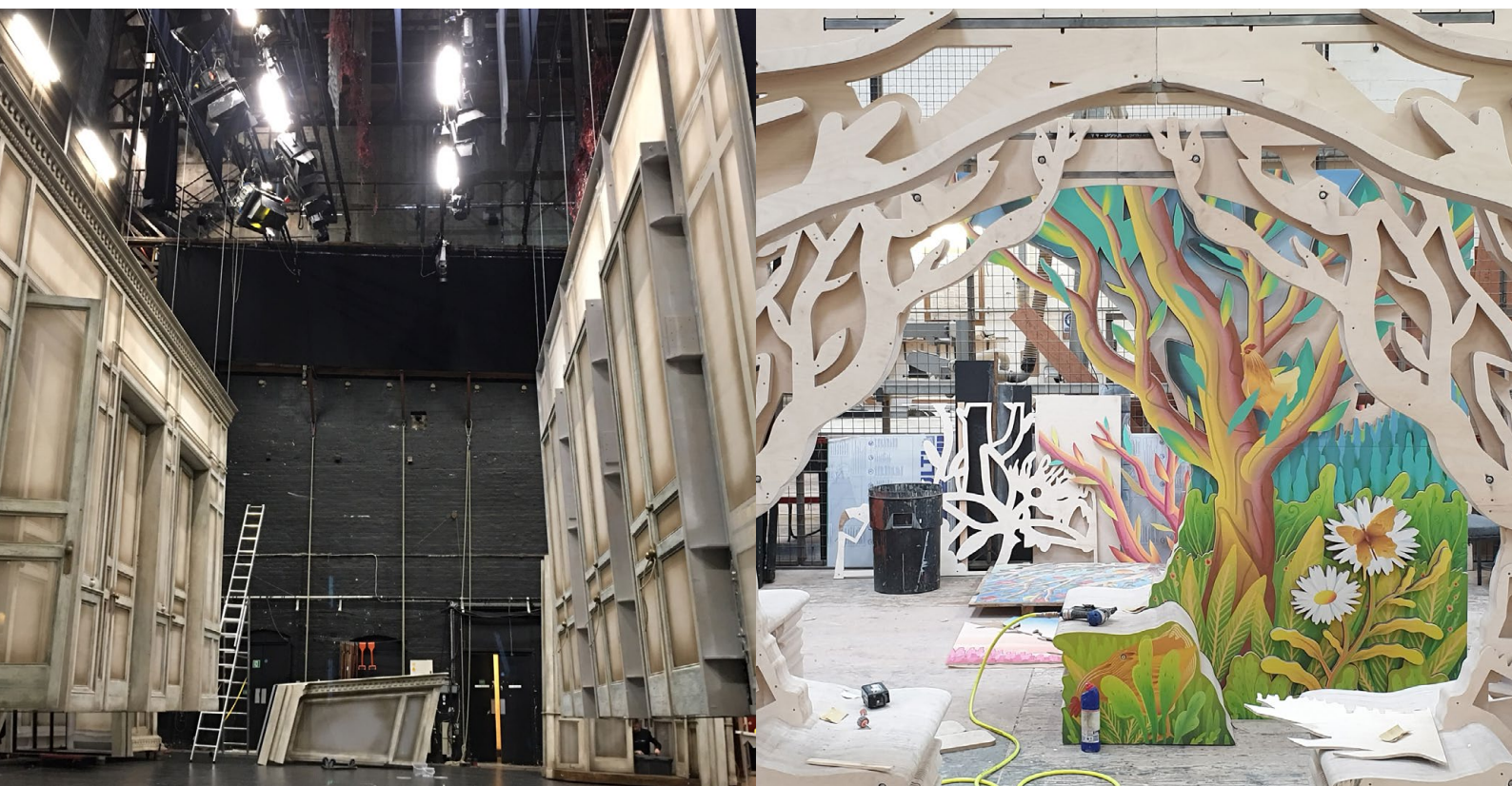
The post of Welder Fabricator requires:

- ┐ A high level of skill and ability in all aspects of scenery construction particularly relating to welding and fabrication techniques, but also in other construction methods associated with the production of scenery.
- ┐ Welder Fabricators will also be highly proficient in the use of all relevant hand and machine tools.
- ┐ Ability to prioritise a complex workload and work to tight deadlines.
- ┐ Excellent interpersonal, verbal, and written communication skills.
- ┐ Ability to work without supervision and to take the initiative, but also to work within a team.
- ┐ Excellent time management skills.
- ┐ Ability to pay attention to detail.
- ┐ Flexibility in working practice.
- ┐ Full clean driving license desirable.*

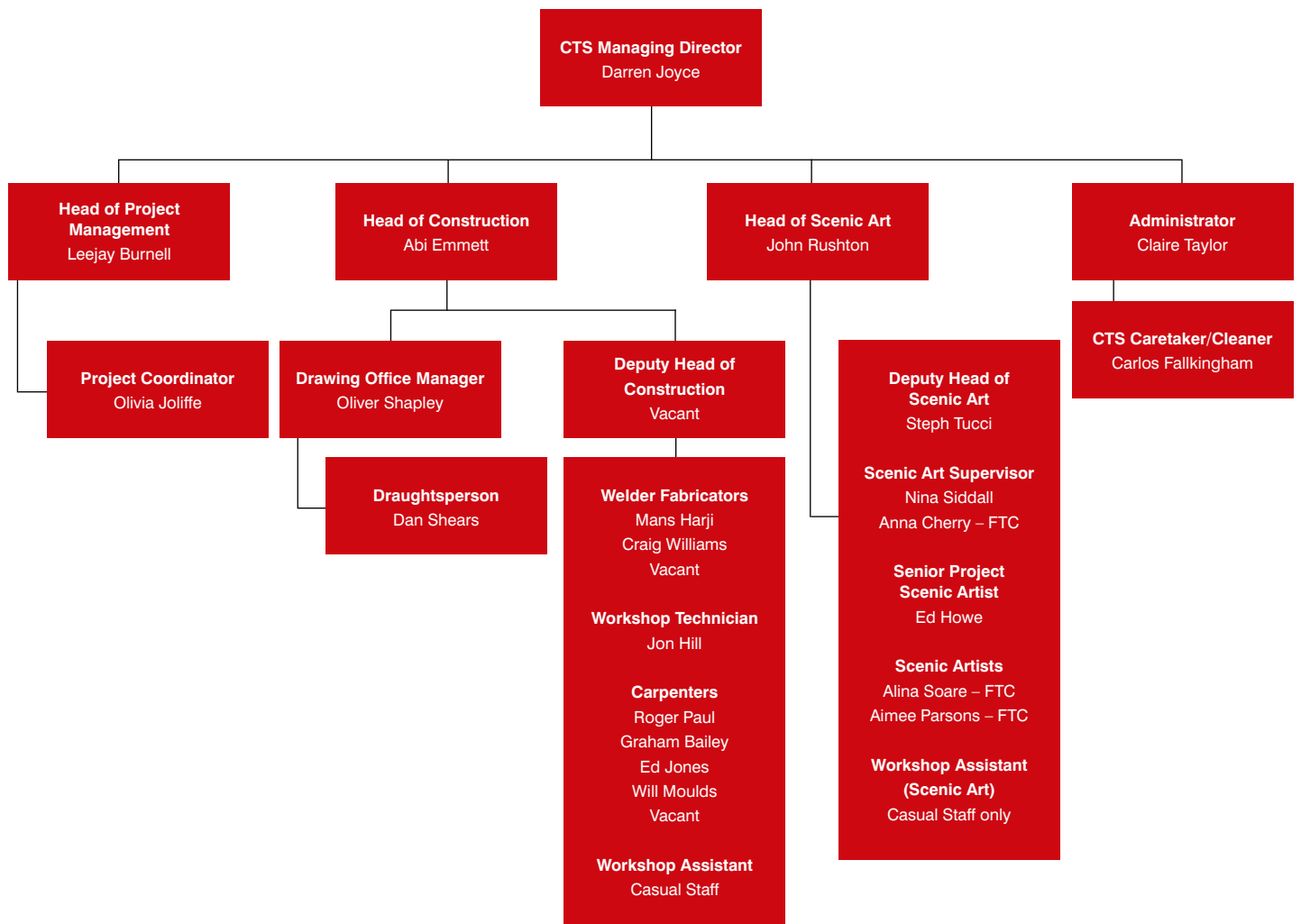
Physical Requirements

- ┐ Welder Fabricators are expected to be on their feet for most of the working day.
- ┐ Whilst working on scenery an employee would be required to climb and /or balance, reach with their arms, stoop, kneel, crouch and crawl.
- ┐ They would be occasionally required to sit and are often expected to lift objects sometimes up to fifty kilos.
- ┐ Welder Fabricators also need to be able to manipulate tools, equipment, and other objects with their hands.

Points marked with an asterisk (*) are desirable rather than essential.



Team Structure



Health and Safety



Individual Responsibilities

All Employees
(Level 6)

Every employed person, including Managers

Responsibilities

All employees are responsible for: -

- ┐ The observance and implementation of rules and systems which are derived from the Health and Safety Policy and the arrangements for its implementation.
- ┐ Taking reasonable care for their personal health and safety and that of fellow employees and others who may be affected either directly or indirectly by their acts or omissions at work.
- ┐ Reporting promptly to the appropriate Manager potential or actual hazards and defects.
- ┐ Taking part in any health and safety training considered by the Company to be necessary in order to comply with the Company Health and Safety Policy and current legislation.
- ┐ Knowing the correct action to be taken in the event of an accident, fire or other emergency.
- ┐ Co-operating with Management and other employees in meeting statutory requirements.
- ┐ Not interfering with or misusing anything provided to protect their health, safety or welfare which is required by legislation and using any machinery, equipment, substance or safety device in accordance with any training and instruction.